

MINDENHURST

NEWSLETTER

January 2025



CREATED WITH CARE BY

SKANSKA

Welcome to our monthly newsletter, which we use to keep you up to date with the latest progress from Mindenhurst and provides a direct, on-site point of contact for any concerns or queries you may have.

Construction Update

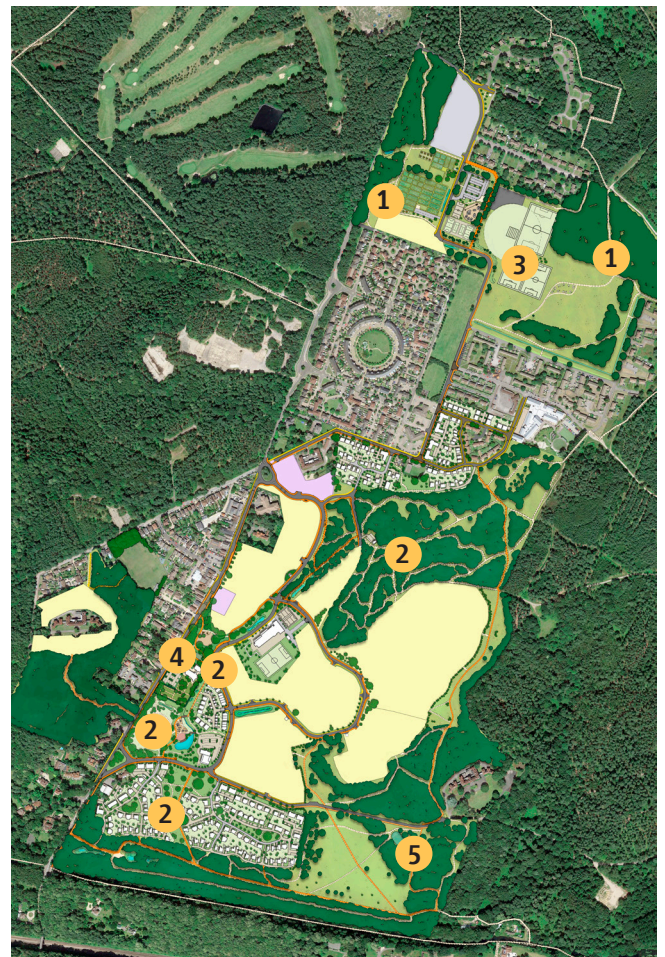
1. Soft landscaping works are progressing in the North Alma ANGST and Dettingen ANGST.
2. Landscape maintenance will continue to the Central SANG, Village Green, Mindenhurst Road, Green Swathe (now open) and Southern SUDs.
3. Northern area - Work on the sports pitches continues with drainage underway and seeding planned for the Spring.
4. Construction on the new Church Hall is progressing well. We have started the internal fitout, including the internal walls, floor screeding, and electrical / mechanical works.
5. Construction of the southern SANG continues with landscaping and the installation of new footpaths.

Southern SANG Update

(Location: 5)

The Southern SANG (Suitable Alternative Natural Greenspace) will offer over 20 hectares of accessible woodland with a central parkland-style clearing featuring avenues and trees. A 2.5km circular route will connect to the Central SANG via the SANGs Link, with footways and cycleways linking to the wider pedestrian and cycle network.

Progress is going well, with all hard landscaping completed, including paths, furniture installation, and tree planting. In the Spring we will complete our final work, seeding and the additional planting, creating this new natural space for the community.



Community Drop-In

Our next community drop-in will take place on Wednesday 29th January, 10am-12pm.

As usual our drop-in session will be held in our office on Newfoundland Road and our staff will be on hand to answer questions.



Big Garden Birdwatch

Get Involved in the Big Garden Birdwatch

This year's Big Garden Birdwatch is taking place on 24th-26th January.

Each year, hundreds of thousands of nature lovers participate to help monitor and protect birds across the UK. It's a wonderful opportunity to connect with nature and contribute to important conservation efforts. To find out more visit their website: rspb.org.uk.



New Parish Established

The Diocese of Guildford has announced the creation of a new parish in Deepcut, marking the first new parish in Surrey this century. The former St Barbara's Garrison Church, which is currently being refurbished, is set to become the heart of this newly-created parish. As a parish, the church will have its own geographical territory within the diocese and operate independently with its own governance and finances, including legal rights to perform baptisms, weddings, and funerals.

For more information, please visit our website.

Construction Programme

The timeline below outlines some key milestones for the development.

Winter 2024/25

- Ongoing construction: Church Hall fit out
- Northern ANGST landscaping/paths
- Southern SANG paths and landscaping

Spring 2025

- Southern SANG seeding / landscaping
- Sports Pitches - drainage and seeding
- Commence allotments
- Work will commence on the sports hub car park and Church Hall car park including hard/ soft landscaping once all planning conditions are approved by SHBC.

The Hope Hub Donations

A big thank you to everyone who donated to our latest food collection for The Hope Hub! They are a local charity that works tirelessly to help prevent and provide support to those experiencing homelessness.

All our donations of food and toiletries were delivered just before Christmas.

Gemma Johnson at The Hope Hub asked us to pass on her thanks: "As we raced towards Christmas, your kindness and dedication is so appreciated. We simply could not help our Service Users navigate this season and the tough winter months without the incredible support of our amazing community."

To find out more about their work or how you can help, please visit their website: thehopehub.org.uk.

Site contact details

@ hello@mindenhurst.co.uk

Senior Project Manager:
Ed Martin, 07823 354 295

f [facebook.com/MindenhurstDeepcut](https://www.facebook.com/MindenhurstDeepcut)

E-newsletter

Sign up to our e-newsletter to receive the latest news from the development. Subscribe via our dedicated project website: mindenhurst.co.uk

