

MINDENHURST

NEWSLETTER

November 2024



CREATED WITH CARE BY

SKANSKA

Welcome to our monthly newsletter, which we use to keep you up to date with the latest progress from Mindenhurst and provides a direct, on-site point of contact for any concerns or queries you may have.

Construction Update

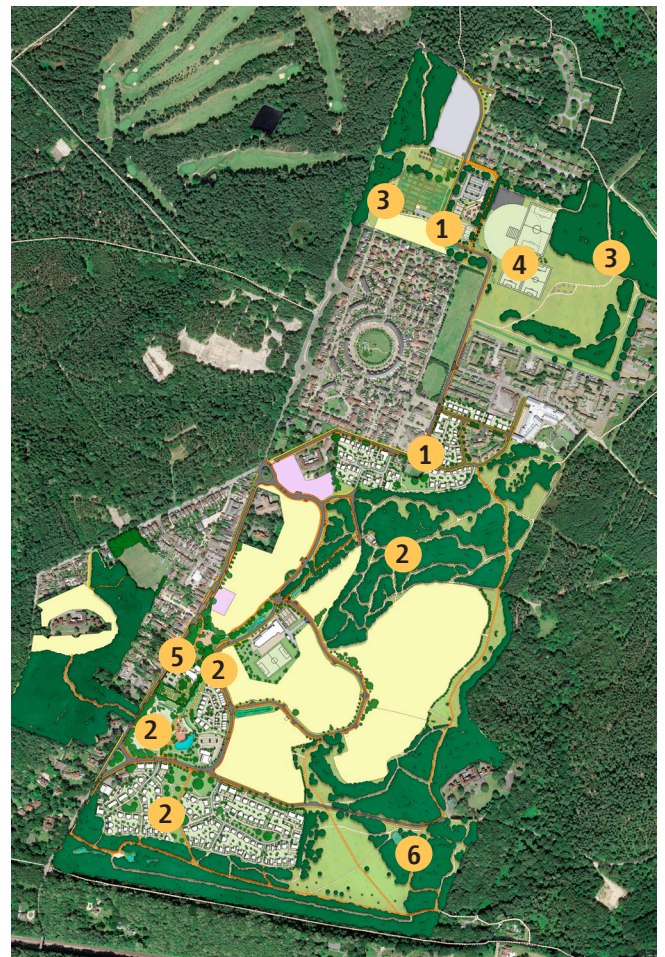
1. Works to upgrade the DIO Roads have now been completed.
2. Landscape maintenance will continue to the Central SANG, Village Green, Mindenhurst Road, Green Swathe and Southern SUDs.
3. Soft landscaping works are progressing in the North Alma ANGST and Dettingen ANGST.
4. Northern area - update below.
5. Construction on the new Church Hall is progressing well. We have started the internal fitout, including the internal walls, floor screeding, and electrical / mechanical works.
6. Construction of the southern SANG continues with landscaping and the installation of new footpaths.

Northern Area

(Location: 3 and 4)

We are thrilled to share the latest updates on the transformation in the north, where nearly 2500 meters of paths and cycleways have been completed to improve accessibility. Work on the sports pitches continues with drainage underway and seeding planned for March next year. This area will also feature an outdoor gym and foundations for this have just been laid.

In March, we will start to prepare the sports hub for the new car park, play areas, tennis courts, and additional facilities.



Community Drop-In

Our next community drop-in will take place on Wednesday 27th November, 10am-12pm. As usual our drop-in session will be held in our office on Newfoundland Road and our staff will be on hand to answer questions.



Mindenhurst Care Centre

CHD Living granted planning permission for their pioneering care facility.

Surrey Heath Borough Council has unanimously approved planning permission for the Mindenhurst Care Centre. Designed by the renowned architects Pollard Thomas Edwards, the new centre will span over three acres on the northern edge of the Mindenhurst woodland and is scheduled to break ground in 2025.

This development will serve as a dedicated space for specialised care, with 70 care bedrooms and 20 post-operative care suites. These spaces, nestled among pine trees, will cater to individuals with complex care needs, including older adults, dementia patients, and those requiring rehabilitation following physical trauma or surgery.

Liakat Hasham, Co-Founder and CEO of CHD Living, added, "Securing planning permission for the Mindenhurst Care Centre is a proud milestone for us. This facility represents our long-standing commitment to innovative, high-quality care that meets the unique needs of each individual. We are deeply invested in Surrey's future, and we are eager to contribute to this exciting new neighbourhood."

Construction Programme

The timeline below outlines some key milestones for the development.

Autumn 2024

- Ongoing construction: Church Hall, Northern Area, site-wide infrastructure and drainage, northern ANGST paths / landscaping, and sports pitches.
- Deepcut Bridge Road completed.
- DIO Roads (North and South) substantially complete.

Winter 2024

- Ongoing construction: Church Hall, Northern ANGST landscaping/paths, Southern SANG paths and landscaping.

The Hope Hub Donations

We are collecting donations of essential items to deliver to The Hope Hub before Christmas. They are currently running short on a few items, so we are collecting donations in the Project Office on Newfoundland Road until 18th December. Below are a few ideas of what you can donate but you can see the full list on our website: mindenhurst.co.uk/news/hope-hub-donations-2.

- Tins - meat, fish, veg, fruit.
- Snacks - Pot noodles, cereal bars, crisps, biscuits.
- Toiletries - deodorant, toilet rolls, tooth brushes.
- Drinks - Tea, coffee, water, soft drinks.

Site contact details

@ hello@mindenhurst.co.uk

Senior Project Manager:
Ed Martin, 07823 354 295

f facebook.com/MindenhurstDeepcut

E-newsletter

Sign up to our e-newsletter to receive the latest news from the development. Subscribe via our dedicated project website: mindenhurst.co.uk

