

MINDENHURST

NEWSLETTER

June 2024



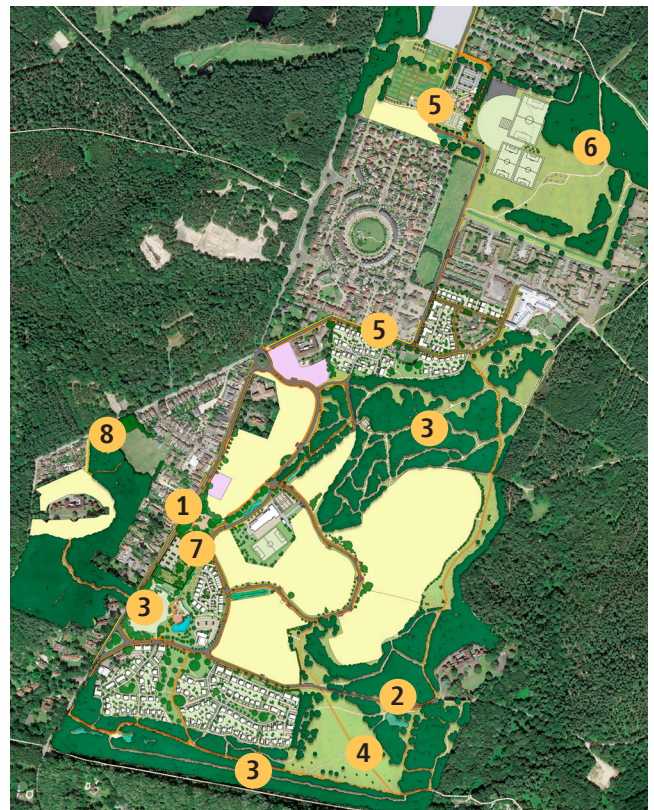
CREATED WITH CARE BY

SKANSKA

Welcome to our newsletter, which we use to keep you up to date with the latest progress from Mindenhurst and provides a direct, on-site point of contact for any concerns or queries you may have.

Construction Update

1. Deepcut Bridge Road environmental improvement works continue. From mid-June our main works will move to the west carriage way. Access to all properties will be maintained throughout our works and further information has been sent to residents and businesses in this area.
2. The construction of Brunswick Road is progressing. Following the final utility services installation, we will complete footpaths at the east end of the road.
3. Landscape maintenance will continue to the Central SANG, Village Green, Mindenhurst Road, and Southern SUDs.
4. We will continue landscaping works in the Southern SANG (former Fuel Depot within Princess Royal Barracks) including new footpaths, street furniture and planting.
5. Works to upgrade DIO Roads are continuing, with new roads, footpaths, storm and foul drainage and high voltage cable installation. Over the coming months we will be working along Newfoundland Road so take extra care when navigating the area and follow any diversion signs that may be in place.
6. We have installed tree protection fencing to the Northern ANGST in preparation for hard and soft landscaping works to commence.
7. We are commencing foundation works and drainage installation at the new church hall
8. We have been carrying out improvement works on the access to Blackdown Playing Field. Please note, there will be a temporary closure of the field as we transition the land ownership to SHBC.



E-Newsletters

Starting next month, we will transition to exclusively e-newsletters. This digital format allows us to deliver the latest updates straight to your inbox. To ensure you don't miss out on our latest news, please subscribe through our website at mindenhurst.co.uk.

We understand the importance of accessibility for all residents, so if you would prefer a printed copy you can register your request by simply sending an email to hello@mindenhurst.co.uk.

New Sensory Garden

We were thrilled to collaborate with Graduate Landscape on a new sensory garden at Camberley Manor Care Home.

The new sensory garden will provide residents with a unique and enriching outdoor space that stimulates the senses. It includes scented plants, raised planters, and a new corner arbour to provide a relaxing seating area.

Joanne Anderson Woodley, Business Development Manager, Camberley Manor said:

"We are delighted to have the opportunity to work with the Mindenhurst Team on this community project. We are so appreciative of their time and efforts to make this a tranquil, calming and sensory space for our residents to enjoy."



Community Drop-In

Our next community drop-in sessions will take place at our project office on Newfoundland Road on the following dates:

Wednesday 26th June, 10am-12pm

If you would like to meet a member of the team at an alternative time, please contact hello@mindenhurst.co.uk.



Breaking Ground

This month we will be starting construction of the new church hall at St Barbara's Church. This marks a significant milestone for the development, and will be a vital asset to our growing community, providing a welcoming space for a wide range of activities and events.

The new hall and refurbished church are due for completion in 2025 and once complete, will be gifted to the Church of England Guildford Diocese for the new community.

Visit our website to find out more.

Mindenhurst Care Village

CHD Living unveil their plans for a new care village in Mindenhurst. Poised to commence in 2025, the site, spanning over three acres and located towards the north of Mindenhurst, will become CHD Living's 15th care facility.

The village, which will provide 70 care bedrooms and 20 post-operative care suites, will boast a host of amenities. Reflecting CHD Living's ethos of creating a 'home away from home', the facility merges modern conveniences and the use of new technology with the natural beauty of the Surrey landscapes.

To find out more, visit the mindenhurst website or www.chdliving.co.uk.

Site contact details

@ hello@mindenhurst.co.uk

Senior Project Manager:
Ed Martin, 07823 354 295

f [facebook.com/MindenhurstDeepcut](https://www.facebook.com/MindenhurstDeepcut)

E-newsletter

Sign up to our e-newsletter to receive the latest news from the development. Subscribe via our dedicated project website: mindenhurst.co.uk

